

REVIEWED

By Anne Nord at 11:33 am, Dec 03, 2020

11/25/2020 BW

Worklist: 4632

<u>LAB CASE</u>	<u>ITEM</u>	<u>ITEM TYPE</u>	<u>DESCRIPTION</u>	
C2020-2243	1	BCK	AM 25/AM 26 Blood MultiDrug/THC Screen by LC-QQQ	
C2020-2248	1	BCK	AM 25/AM 26 Blood MultiDrug/THC Screen by LC-QQQ	
C2020-2249	1	BCK	AM 25/AM 26 Blood MultiDrug/THC Screen by LC-QQQ	
C2020-2255	1	BCK	AM 25/AM 26 Blood MultiDrug/THC Screen by LC-QQQ	
C2020-2256	1	AVK	AM 25/AM 26 Blood MultiDrug/THC Screen by LC-QQQ	
C2020-2266	1	BCK	AM 25/AM 26 Blood MultiDrug/THC Screen by LC-QQQ	
C2020-2278	1	BCK	AM 25/AM 26 Blood MultiDrug/THC Screen by LC-QQQ	
C2020-2279	1	BCK	AM 25/AM 26 Blood MultiDrug/THC Screen by LC-QQQ	
C2020-2281	1	BCK	AM 25/AM 26 Blood MultiDrug/THC Screen by LC-QQQ	
C2020-2302	1	UCK	AM 25/AM 26 Urine MultiDrug/THC Screen by LC-QQQ	
C2020-2316	1	BCK	AM 25/AM 26 Blood MultiDrug/THC Screen by LC-QQQ	
C2020-2319	1	UCK	AM 25/AM 26 Urine MultiDrug/THC Screen by LC-QQQ	
C2020-2320	1	UCK	AM 25/AM 26 Urine MultiDrug/THC Screen by LC-QQQ	
C2020-2323	1	UCK	AM 25/AM 26 Urine MultiDrug/THC Screen by LC-QQQ	
C2020-2340	1	BCK	AM 25/AM 26 Blood MultiDrug/THC Screen by LC-QQQ	
C2020-2341	1	BCK	AM 25/AM 26 Blood MultiDrug/THC Screen by LC-QQQ	
C2020-2347	2	BCK	AM 25/AM 26 Blood MultiDrug/THC Screen by LC-QQQ	
C2020-2367	1	BCK	AM 25/AM 26 Blood MultiDrug/THC Screen by LC-QQQ	
C2020-2368	1	BCK	AM 25/AM 26 Blood MultiDrug/THC Screen by LC-QQQ	
C2020-2369	1	BCK	AM 25/AM 26 Blood MultiDrug/THC Screen by LC-QQQ	
P2020-3146	1	BCK	AM 25 Blood Multi-Drug Screen by LC-QQQ	

Worklist: 4632

BW

<u>LAB CASE</u>	<u>ITEM</u>	<u>ITEM TYPE</u>	<u>DESCRIPTION</u>
P2020-3350	1	BCK	AM 25/AM 26 Blood MultiDrug/THC Screen by LC-QQQ



AM# 25: Multi-Drug Screen in Blood and Urine by LC-MS/MS

BW

Extraction Date: 11/27/2020

Analyst: Britany Wylie

Plate lot#: 200511

Plate Expiration: 11/11/2020

Mobile phase A: 10mM Amm Form

0.5M Ammonium Hydroxide

Mobile phase B: 0.1% Formic Acid in MeOH

Ethyl Acetate

LC Methanol

Blank Blood Lot: 20G20792 **Blank Urine lot:** 10120 **Column:** Phenomenex Phenyl Hexyl (4.6x50mm, 2.6um)

LCMS-QQQ ID: 69679

Pre-Analytic:

- 1. Check levels of mobile phases and needle wash refill as needed. Ensure waste is not full.
- 2. Ensure correct column is installed and begin mobile phase flow allow to equilibrate ~ 30 minutes.

Analytic:

- 1. Remove standards, plate, controls, and samples from cold storage. Allow to reach room temperature.
- 2. Urine hydrolysis pipette: 250 ul urine in blank well, add 40 ul BG Turbo, add 100 ul 500 mm sodium phosphate buffer mix for at least five minutes ambient temperature.
Pipette 250 µL blood (calibrated pipette) or 250 ul urine in wells of analytical (standards) plate. **Pipette ID: 1926134**
- 3. Place on shaking incubator at ambient temp., 900 rpm for 15 minutes.
- 4. Pipette 250 µL of 0.5 M ammonium hydroxide in wells of analytical plate.
- 5. Place on shaking incubator at ambient temp., 900 rpm for 15 minutes.
- 6. Transfer 300 µL of blood or urine+base mixture to corresponding wells of SLE+ plate.
- 7. Apply positive pressure for approx. 10-15 seconds (or until no liquid remains on top of sorbent).
(Load at 85-100 PSI- Selector to the right) Manifold ID: 66792
- 8. Wait 5 minutes.
- 9. Add 900 µL ethyl acetate.
- 10. Wait 5 minutes.
- 11. Apply positive pressure for approx. 10-15 seconds. (12-15 PSI- Selector to the left).
- 12. Add 900 µL ethyl acetate.
- 13. Wait 5 minutes.
- 14. Apply positive pressure for approx. 10-15 seconds. (12-15 PSI- Selector to the left).
- 15. Remove plate containing eluate. Urine samples add 50ul 1% HCl in MeOH Place on SPE Dry and evaporate to dryness at approx. 35°C.
SPE Dry ID: 66819
- 16. Reconstitute in 100 µL 20% LC MeOH in LC Water and heat seal plate with foil. Place in autosampler and run worklist.

Post-Analytic

- 1. Open quantitation software and create a new quantitation batch.
- 2. Make necessary changes to integration limits
- 3. Evaluate samples, S/N of primary transition >5 and S/N of secondary transition >3 or evaluation of peak symmetry and resolution. Within +/- 2% or 0.1 min RT of administrative control. Calculated concentration 5 or greater or 2-5 for discretionary range.
- 4. Did all QCs pass for each analyte? (If no is it described in comments?)
- 5. Central File Packet to include: LIMS Worklist, Method Checklist, Calibration and Control Reports

COMMENTS: Due to the extraction occurring after the expiration of the analytical plate, an external control was included with this run as specified in the analytical method.

AM 25
11/27 WORKLIST 4632

BW

	1	2	3	4	5	6	7	8	9	10	11	12
A	IS + Cal. 1	C2249-1	C2340-1									
B	IS + Cal. 1	C2255-1	C2341-1	urine ext ctrl								
C	IS + Cal 2	C2256-1	C2347-2	C2302-1								
D	IS + Cal 2	C2266-1	C2367-1	C2319-1								
E	neg blood	C2278-1	C2368-1	C2320-1								IS + Cal 2
F	blood ext ctrl	C2279-1	C2369-1	C2323-1								IS + Cal 2
G	C2243-1	C2281-1	p3146-1									IS + Cal. 1
H	C2248-1	C2316-1	p3350-1	negurine								IS + Cal. 1

All wells to contain 60 µl of residual DMSO

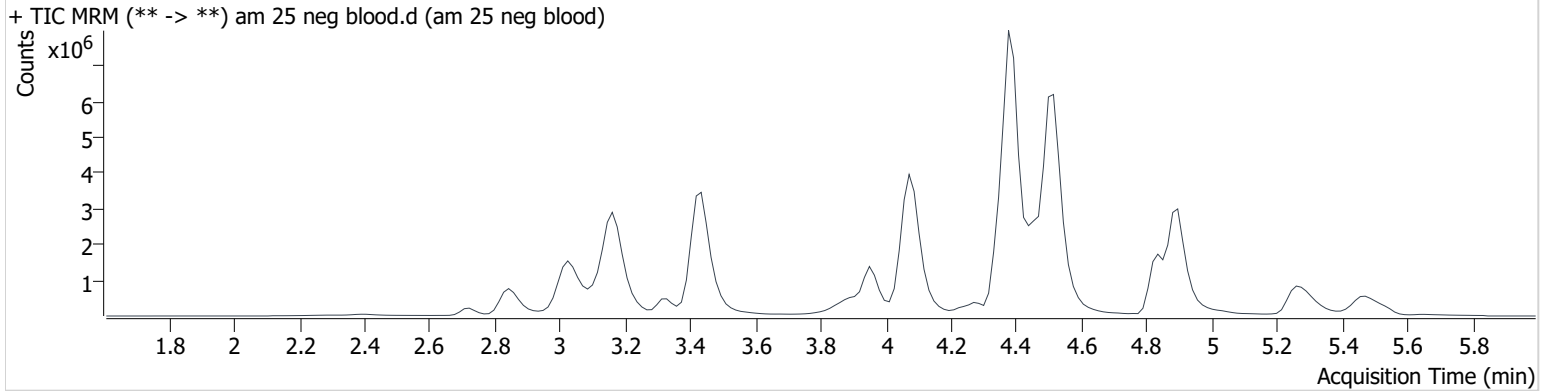
Case #: 2020-____ -

AM #25 Multi-Drug Screen Results

Batch results D:\MassHunter\Data\2020 Data\am 25-26 112720\QuantResults\mds.batch.bin
Calibration Last Update 11/27/2020 10:20:17 PM

Instrument	69679	Data File	am 25 neg blood.d
Type	Sample	Sample	am 25 neg blood
Acq. Method	mds 826.m	Operator	Britany Wylie
Sample Position	P2-E1	Comment	
Injection Volume	2.5		
Acq. Date-Time	11/27/2020 1:15:49 PM		
Sample Info.			

Sample Chromatogram



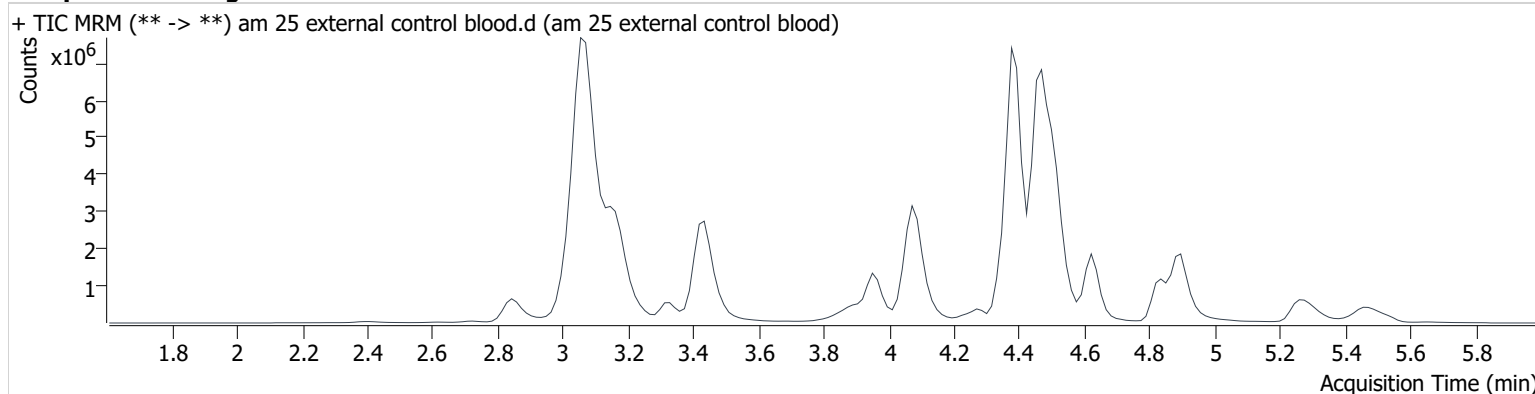
Name	RT	Resp.	S/N	S/N	ISTD Resp.	Calc. Conc.
Doxepin	5.042 High	24269	15.4	4.5 Low	8527232	0.576
Methamphetamine	3.081	481105	28.6	17.0	6586448	3.044
Olanzapine	4.550	7466	6.6	3.7 Low	69503	1.270

AM #25 Multi-Drug Screen Results

Batch results D:\MassHunter\Data\2020 Data\am 25-26 112720\QuantResults\mds.batch.bin
Calibration Last Update 11/27/2020 10:20:17 PM

Instrument	69679	Data File	am 25 external control blood.d
Type	Sample	Sample	am 25 external control blood
Acq. Method	mds 826.m	Operator	Britany Wylie
Sample Position	P2-F1	Comment	
Injection Volume	2.5		
Acq. Date-Time	11/27/2020 1:22:31 PM		
Sample Info.			

Sample Chromatogram



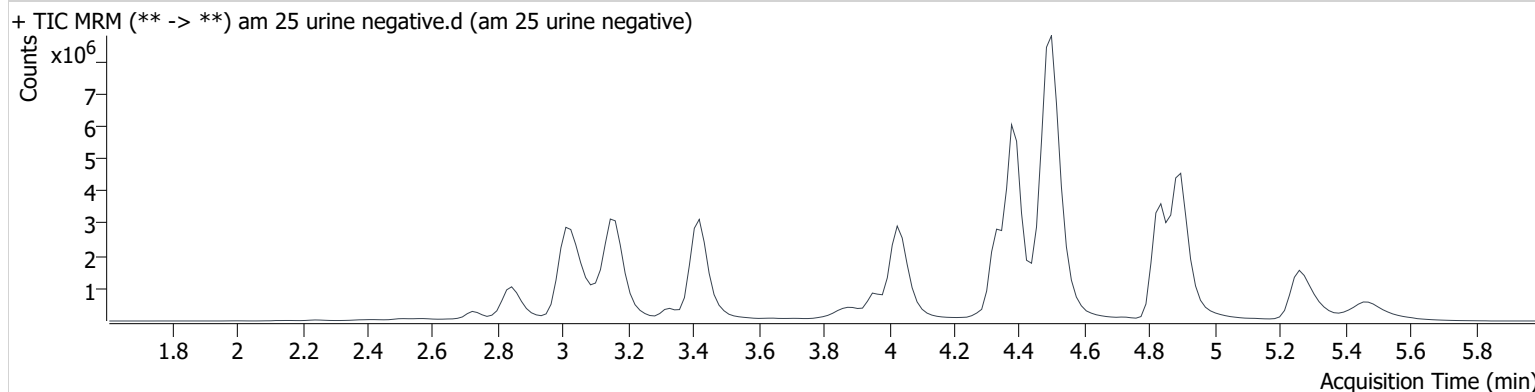
Name	RT	Resp.	S/N	S/N	ISTD Resp.	Calc. Conc.
Methamphetamine	3.081	14952933	7072.6	550.6	7170995	86.894
Midazolam	4.624	2707379	6000.2	1281683.1	5689782	94.461
Temazepam	4.476	11536203	932.0	730.4	5689782	103.337

AM #25 Multi-Drug Screen Results

Batch results D:\MassHunter\Data\2020 Data\am 25-26 112720\QuantResults\mds.batch.bin
Calibration Last Update 11/27/2020 10:20:17 PM

Instrument 69679 **Data File** am 25 urine negative.d
Type Sample **Sample** am 25 urine negative
Acq. Method mds 826.m **Operator** Brittany Wylie
Sample Position P2-H4 **Comment**
Injection Volume 2.5
Acq. Date-Time 11/27/2020 3:29:53 PM
Sample Info.

Sample Chromatogram



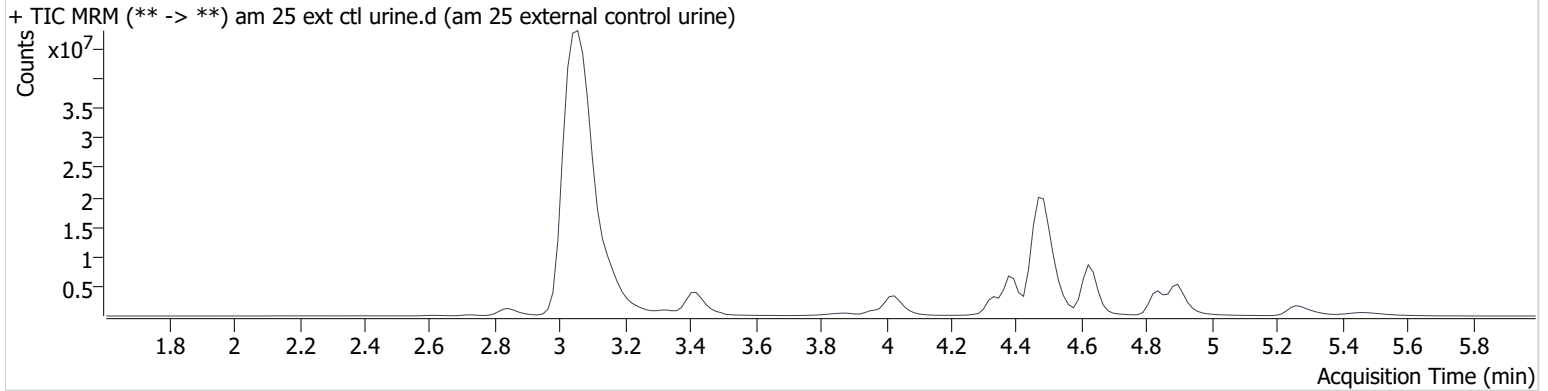
Name	RT	Resp.	S/N	S/N	ISTD Resp.	Calc. Conc.
Acetyl Fentanyl	4.625	5015	1.4 Low		11924763	1.112
Codeine	3.344	77742	72.0	89.5	3143863	4.582
Methamphetamine	3.066	992260	74.9	30.1	12723409	3.250
Morphine	2.438	33945	345.2	78.2	113564	2.498
Oxazepam	4.262	15583	2.8 Low	18.6	467810	2.091

AM #25 Multi-Drug Screen Results

Batch results D:\MassHunter\Data\2020 Data\am 25-26 112720\QuantResults\mds.batch.bin
Calibration Last Update 11/27/2020 10:20:17 PM

Instrument 69679 **Data File** am 25 ext ctl urine.d
Type Sample **Sample** am 25 external control urine
Acq. Method mds 826.m **Operator** Britany Wylie
Sample Position P2-B4 **Comment**
Injection Volume 2.5
Acq. Date-Time 11/27/2020 3:36:35 PM
Sample Info.

Sample Chromatogram



Name	RT	Resp.	S/N	S/N	ISTD Resp.	Calc. Conc.
Fentanyl	4.837	3692	2.8 Low		11468562	0.197
Methamphetamine	3.066	102084962	22498.6	29149.1	12977475	327.803
Midazolam	4.624	14196721	5883.6	∞	3410776	826.293
Temazepam	4.476	38514972	2089.0	226.5	3410776	575.524

Toxicology AM method 25/28 urine external control prep
working solution 10000 ng/ml in meoh methamphetamine, temazepam, midazolam
Stock solution 1mg/ml 50 ul each in 4850 ul MeOH (fisher 195629)

ppd 8/6/20: Exp: 4/1/2021 lot 4121 by baw

Drug	lot	expiration
Methamphetamine	FE08101708	10/1/2022
midazolam	FE01221602	4/1/2021
temazepam	FE04261601	5/1/2021

AM 25/28 control 500 ul working solution (4121) in 4500 ul negative urine (1000ng/mL Expected concentration)

ppd 8/6/20, exp 4/1/2021 lot u4121 negative urine 73020 by AMN

AM 25/28 Blood Control: 50ul working solution (4121) in 4950 ul neg blood (100ng/mL Expected concentration)

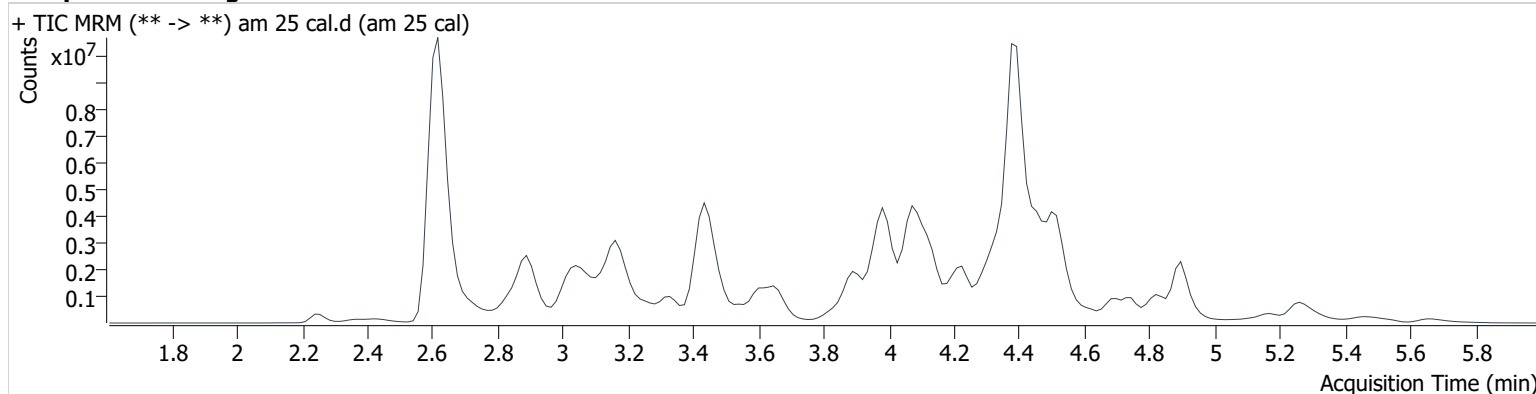
ppp 8/6/20, exp 4/1/21 lot b4121 neg blood 20G20792 by AMN

AM #25 Multi-Drug Screen Results

Batch results D:\MassHunter\Data\2020 Data\am 25-26 112720\QuantResults\mds.batch.bin
Calibration Last Update 11/27/2020 10:20:17 PM

Instrument	69679	Data File	am 25 cal.d
Type	Cal	Sample	am 25 cal
Acq. Method	mds 826.m	Operator	Britany Wylie
Sample Position	P2-A1	Comment	
Injection Volume	2.5		
Acq. Date-Time	11/27/2020 1:02:25 PM		

Sample Chromatogram



Name	RT	Resp.	S/N	S/N	ISTD Resp.	Calc. Conc.
6-MAM	3.493	29182	13191.4	21.2	785140	10.000
7-aminoclonazepam	3.331	446494	174.2	56.0	1504966	10.000
7-aminoflunitrazepam	3.543	906128	224.4	110.2	1504966	10.000
Acetyl Fentanyl	4.671	46448	22.2	12942.1	12275964	10.000
Acetyl Norfentanyl	2.880	132074	1215.1	245.3	12275964	10.000
a-hydroxyalprazolam	4.302	97860	268.8	28626.4	1504966	10.000
alpha-hydroxymidazolam	4.409	1903357	636.6	∞	1504966	10.000
alpha-PHP	4.480	1157755	730.8	303.8	3053533	10.000
alpha-PVP	4.237	2208004	928.1	286.7	3053533	10.000
Alprazolam	4.429	1040473	775.1	4360.2	5610908	10.000
Amitriptyline	5.269	262053	96.4	56.0	1235981	10.000
Amphetamine	2.900	1349839	360.6	870.5	3053533	10.000
Benzoylcegonine	3.072	368609	393.3	530.7	182546	10.000
Brompheniramine	4.656	16062	44.1	6.2	10313841	10.000
Buprenorphine	5.258	119084	1449.8	6174.0	475442	10.000
Bupropion	4.388	1253857	568.5	426.4	5179910	10.000
Carbamazepine	3.991	4151491	∞	674.9	72327	10.000
Carisoprodol	3.973	603786	2292.1	156.9	3306717	10.000
Chlordiazepoxide	4.538	377345	348.9	176.2	5610908	10.000
Chlorpheniramine	4.540	1174666	680.9	3347.3	10313841	10.000
Citalopram	4.594	501424	116.7	110.7	10313841	10.000
Clomipramine	5.671	426000	591.2	793.9	1235981	10.000
Clonazepam	4.226	184070	426.7	86192.6	5610908	10.000
Clonazolam	4.162	279927	280627.1	75668.3	5610908	10.000
Cocaethylene	4.303	2168540	534.2	5689.2	15702583	10.000
Cocaine	4.122	3057351	735.1	202.5	15702583	10.000
Codeine	3.359	227619	106.5	271024.0	4217956	10.000
Cyclobenzaprine	5.134	429009	123.3	79.4	1235981	10.000
Desipramine	5.135	503562	42.9	57.5	1235981	10.000
Dextromethorphan	4.890	283585	35.6	32.1	1532508	10.000
Dextrorphan	3.835	1038668	325.3	697.8	1532508	10.000
Diazepam	4.675	507640	1153.7	178.8	5610908	10.000
Dihydrocodeine	3.024	643383	479.6	229.3	4217956	10.000
Diphenhydramine	4.541	1587789	295.4	609.9	10313841	10.000

AM #25 Multi-Drug Screen Results

Name	RT	Resp.	S/N	S/N	ISTD Resp.	Calc. Conc.
Doxepin	4.934	240810	78.1	18.5	4873113	10.000
Doxylamine	4.002	4279358	11283.3	2826.0	1532508	10.000
EDDP	4.385	1651631	559.5	171.0	871965	10.000
Estazolam	4.322	2167370	650.3	460.4	5610908	10.000
Etizolam	4.455	113719	502.4	268287.4	5610908	10.000
Fentanyl	4.837	31542	23.0	102.3	1933356	10.000
Flualprazolam	4.286	313303	373208.1	2868.6	5610908	10.000
Flunitrazepam	4.366	812478	1283.1	19627.1	5610908	10.000
Fluoxetine	4.719	218725	110.8	122.5	1024847	10.000
Flurazepam	4.804	690183	1297.3	202.6	5610908	10.000
Hydrocodone	3.969	666940	174.0	138.5	4217956	10.000
Hydromorphone	2.801	604842	859.0	118.8	148897	10.000
Imipramine	5.268	837851	163.9	166.6	1235981	10.000
Ketamine	4.205	2060451	779.4	159.5	6230307	10.000
Lamotrigine	3.409	170872	346.1	821.4	10313841	10.000
Levamisole	3.474	1226224	46.3	24.1	15702583	10.000
Levetireacetam	2.247	434670	3735.4	3045.4	3306717	10.000
Lorazepam	4.210	84744	83.3	∞	5610908	10.000
Maprotiline	5.270	179884	26.1	48.9	1235981	10.000
MDA	3.110	1057567	271.1	263.9	5988937	10.000
MDEA	3.458	1681151	5457.2	226.6	5988937	10.000
MDMA	3.292	1829585	157.0	189.8	5988937	10.000
Meperidine	4.234	973435	222.0	173.5	1532508	10.000
Meprobamate	3.366	154358	211.3	46.9	3306717	10.000
Methadone	4.809	796862	485.6	212.8	871965	10.000
Methamphetamine	3.081	1437173	534.3	65.3	5988937	10.000
Methocarbamol	3.258	80302	59.8	76.3	871965	10.000
Methylphenidate	3.900	3497939	514.6	346.3	7127442	10.000
Metoprolol	3.605	361093	683.0	1389.1	1532508	10.000
Midazolam	4.624	282640	179189.0	135483.2	5610908	10.000
Mirtazapine	4.708	730940	418.7	989.4	1532508	10.000
Mitragynine	4.849	50730	105264.3	122257.1	1532508	10.000
Morphine	2.438	178172	2021.9	3099.4	148897	10.000
Norbuprenorphine	4.498	10761	430.5	9275.3	475442	10.000
Nordiazepam	4.494	332245	90988.2	348.1	5610908	10.000
Norfentanyl	3.457	2464593	416.6	163.3	12275964	10.000
Norhydrocodone	3.239	30557	19.2	14.9	4217956	10.000
norketamine	4.008	306608	335.0	880.2	10313841	10.000
Normeperidine	3.901	605351	208.5	91.2	10313841	10.000
Noroxycodone	3.040	445815	125.1	66.0	6230307	10.000
Nortriptyline	5.212	246318	86.6	20.5	1235981	10.000
O-desmethyl-tramadol	2.894	4307927	635.2	1078.6	10313841	10.000
Olanzapine	4.550	61154	124.2	30.7	72327	10.000
Oxazepam	4.292	135203	220.0	18.3	848568	10.000
Oxycodone	3.205	1376911	277.1	1953.1	6230307	10.000
Oxymorphone	2.360	413762	155.6	2657.7	148897	10.000
Paroxetine	5.639	12183	5.7	4.0	1024847	10.000
Phenazepam	4.439	440341	162750.3	47813.7	5610908	10.000
Phencyclidine	4.327	1247177	267.1	476.7	1532508	10.000
Phentermine	3.203	661385	190.4	14.5	7127442	10.000
Phenytoin	3.882	116749	255.7	107.0	72327	10.000
Promethazine	5.176	813686	39209.5	200.2	10313841	10.000
Pseudoephedrine	2.627	40669111	21143.8	600.6	5988937	10.000
Quetiapine	4.744	1392094	614.6	32775.0	21685617	10.000
Sertraline	5.460	203446	1097.9	∞	1024847	10.000
Sufentanil	5.063	26413	19781.5	49.3	12275964	10.000
Tapentadol	3.610	2457135	1361.2	373.1	6230307	10.000
Temazepam	4.476	1100896	526.0	75.4	5610908	10.000
Tramadol	3.666	4125003	1041.7	87.5	10313841	10.000
Trazodone	4.897	1046508	817.5	1735.0	4873113	10.000

BW

AM #25 Multi-Drug Screen Results

Name	RT	Resp.	S/N	S/N	ISTD Resp.	Calc. Conc.
Venlafaxine	4.125	2848155	3245.4	101.2	1024847	10.000
Zaleplon	4.152	794458	1041.9	493.1	21685617	10.000
Zolpidem	4.398	4511917	2466.4	17292.0	21685617	10.000
Zopiclone	4.437	274186	1479.3	838.5	1346524	10.000

AM# 26: THC and Metabolites Screen in Blood by LC-MS/MS

Extraction Date: 11/27/2020

Analyst: Britany Wylie

Plate lot#: 200723

Plate Expiration: 1-23-2021

Mobile phase A: 10mM Ammonium Formate
0.1% Formic Acid in Water
1N KOH Saturated Phosphate Buffer

Mobile phase B: 0.1% Formic acid in MeOH
MTBE Hexane

Blank Blood Lot: 20G20792

Urine Blank: 10120

Column: Phenomenex Phenyl Hexyl (4.6x50mm: 2.6 um)

LCMS-QQQ ID: 69679

Pre-Analytic:

- 1. Check levels of mobile phases and needle wash refill as needed. Ensure waste is not full.
- 2. Ensure correct column is installed and begin mobile phase flow allow to equilibrate ~ 30 minutes.

Analytic:

- 1. Remove standards, plate, controls, and samples from cold storage. Allow to reach room temperature.
- 2. Urine hydrolysis: add 1.5 ml urine to blank plate, add 250 ul 1N KOH mix and incubate at 40 degrees for 15 minutes.
Pipette **1000 µL blood (calibrated pipette)** in wells of analytical (standards) plate. **Pipette ID: K52558g**
Pipette 1000 ul urine to analytical (standards) plate.
- 3. Place on shaking incubator at ambient temp., 900 rpm for 15 minutes.
- 4. Pipette **500 µL 0.1% formic acid in blood** wells **500 ul saturated phosphate buffer in urine** wells of analytical plate.
- 5. Place on shaking incubator at ambient temp., 900 rpm for 15 minutes.
- 6. Transfer **800 µL of blood acid or urine acid** mixture to corresponding wells of SLE+ plate.
- 7. Apply positive pressure for approx. 10-15 seconds (or until no liquid remains on top of sorbent).
(Load at 85-100 PSI- Selector to the right) Manifold ID: 66792
- 8. Wait 5 minutes.
- 9. Add **2.25 mL MTBE** (add in 3 increments of 750 µL).
- 10. Wait 5 minutes.
- 11. Apply positive pressure for approx. 10-15 seconds. *(12-15 PSI- Selector to the left)*.
- 12. Add **2.25 mL hexane** (add in 3 increments of 750 µL).
- 13. Wait 5 minutes.
- 14. Apply positive pressure for approx. 10-15 seconds. *(12-15 PSI- Selector to the left)*.
- 15. Remove plate containing eluate. Place on SPE Dry and evaporate to dryness at approx. 35°C.
SPE Dry ID: 66819
- 16. Reconstitute in **100 µL 100% LCMS MeOH** and heat seal plate with foil. Place in autosampler and run worklist.

Post-Analytic

- 1. Create batch and process data.
- 2. Calculated sample concentration of 3 ng/mL or greater for THC and THC-OH, a calculated sample concentration of 10 ng/mL or greater for Carboxy-THC.
- 3. Retention time within +/- 2% or +/-0.100 min whichever is greater of the average retention time of the calibrators.
- 4. Did all QCs pass for each analyte? Yes
- 5. Central File Packet to include: LIMS Worklist, Method Checklist, Calibration and Control Reports

COMMENTS:

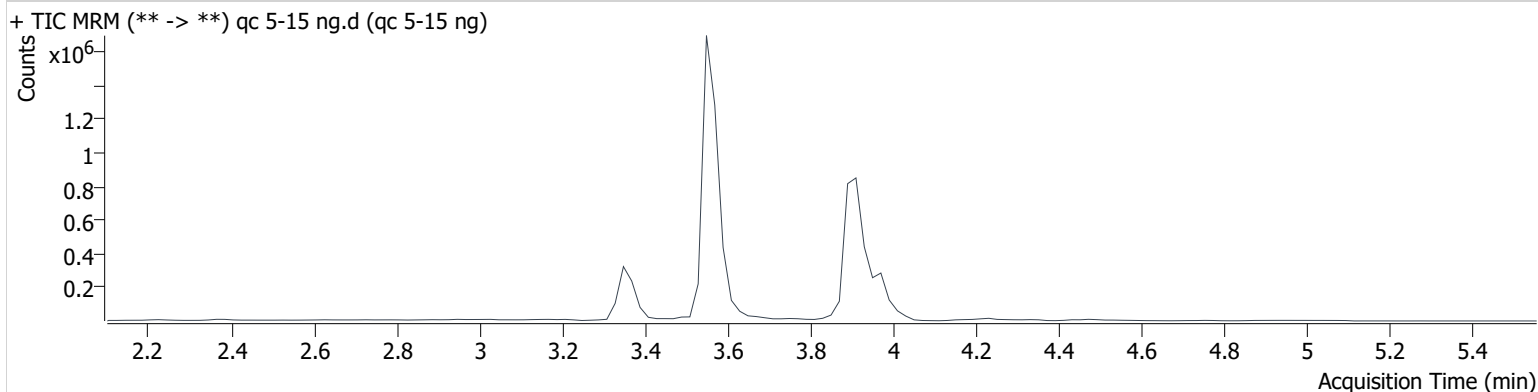
AM #26 Cannabinoids Screen Results

Batch results D:\MassHunter\Data\2020 Data\am 25-26 112720\QuantResults\mj scr.batch.bin
Calibration Last Update 11/27/2020 10:29:37 PM

Instrument	69679	Data File	qc 5-15 ng.d
Type	QC	Sample	qc 5-15 ng
Acq. Method	am 26 cann scr 5-5-20.m	Operator	Britany Wylie
Sample Position	P3-H1	Comment	
Injection Volume	5		
Acq. Date-Time	11/27/2020 6:03:16 PM		

Sample Info.

Sample Chromatogram



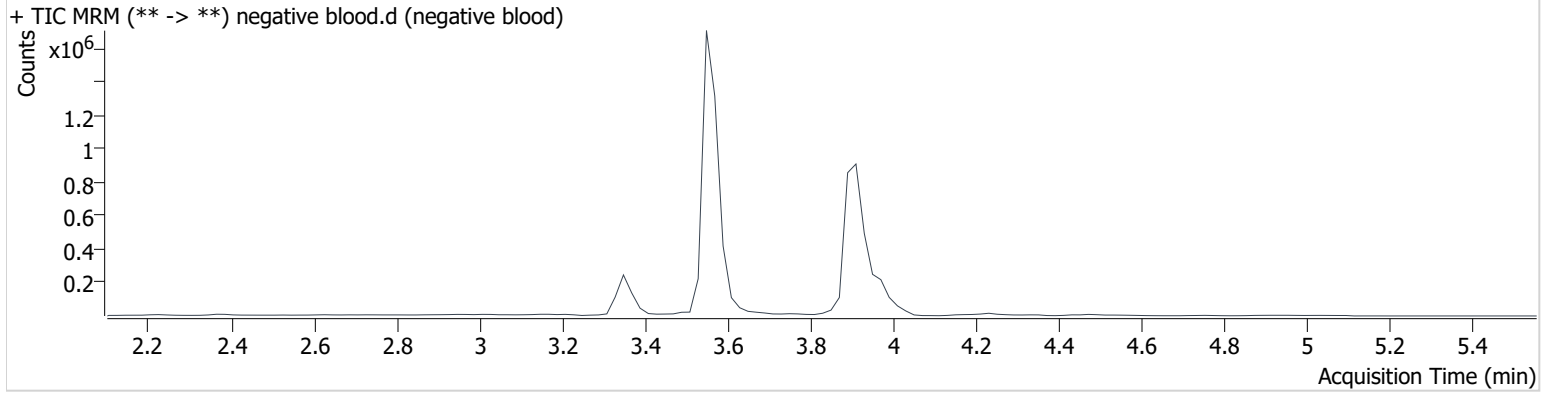
Name	RT	Resp.	ISTD Resp.	Final Conc.
THC	3.984	21214	528417	4.584 ng/ml
THC-COOH	3.351	137710	588045	15.623 ng/ml
THC-OH	3.558	36947	4305980	4.617 ng/ml

AM #26 Cannabinoids Screen Results

Batch results D:\MassHunter\Data\2020 Data\am 25-26 112720\QuantResults\mj scr.batch.bin
Calibration Last Update 11/27/2020 10:29:37 PM

Instrument	69679	Data File	negative blood.d
Type	Sample	Sample	negative blood
Acq. Method	am 26 cann scr 5-5-20.m	Operator	Britany Wylie
Sample Position	P3-A2	Comment	
Injection Volume	5		
Acq. Date-Time	11/27/2020 6:09:54 PM		
Sample Info.			

Sample Chromatogram

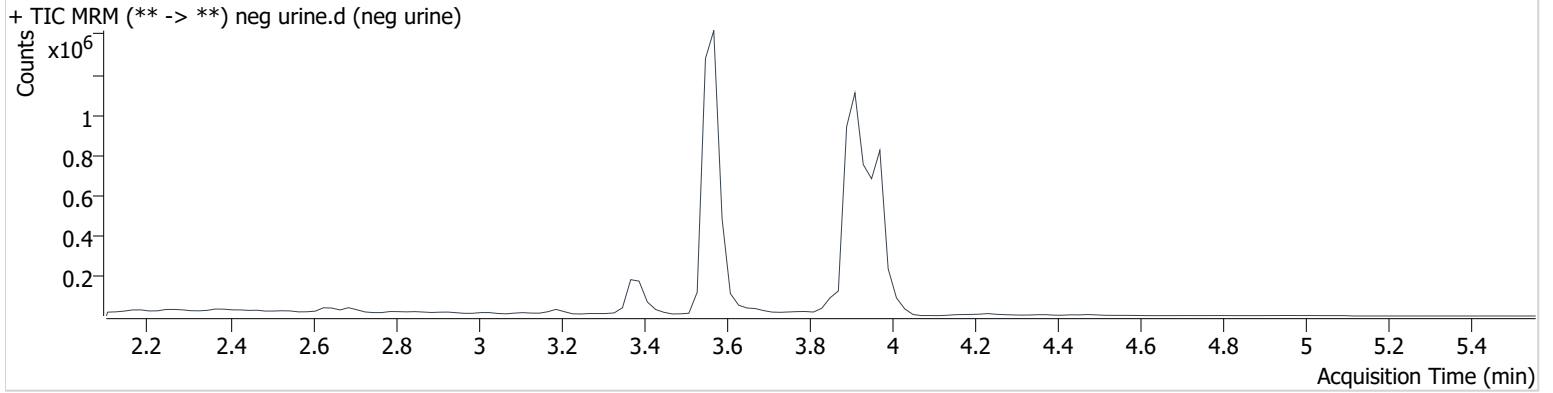


AM #26 Cannabinoids Screen Results

Batch results D:\MassHunter\Data\2020 Data\am 25-26 112720\QuantResults\mj scr.batch.bin
Calibration Last Update 11/27/2020 10:29:37 PM

Instrument	69679	Data File	neg urine.d
Type	Sample	Sample	neg urine
Acq. Method	am 26 cann scr 5-5-20.m	Operator	Britany Wylie
Sample Position	P3-C4	Comment	
Injection Volume	5		
Acq. Date-Time	11/27/2020 8:08:48 PM		
Sample Info.			

Sample Chromatogram

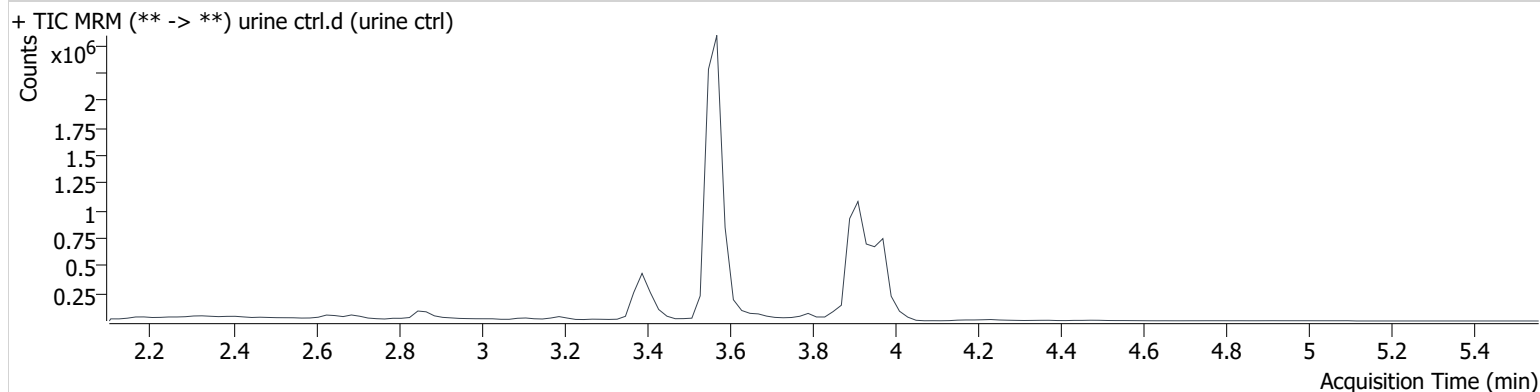


AM #26 Cannabinoids Screen Results

Batch results D:\MassHunter\Data\2020 Data\am 25-26 112720\QuantResults\mj scr.batch.bin
Calibration Last Update 11/27/2020 10:29:37 PM

Instrument	69679	Data File	urine ctrl.d
Type	Sample	Sample	urine ctrl
Acq. Method	am 26 cann scr 5-5-20.m	Operator	Britany Wylie
Sample Position	P3-D4	Comment	
Injection Volume	5		
Acq. Date-Time	11/27/2020 8:15:24 PM		
Sample Info.			

Sample Chromatogram



Name	RT	Resp.	ISTD Resp.	Final Conc.
THC	3.984	78717	1385879	6.448 ng/ml
THC-COOH	3.391	306572	574600	38.059 ng/ml
THC-OH	3.578	298920	4932592	32.218 ng/ml

BW

Toxicology AM method 27/26 external prep information

working solution 15 ug/ml in meoh C-THC, THC-OH, 7.5 ug/ml THC

Stock solution 1mg/ml 7.5 ul each THC, 100 ug/ml 150 ul C-THC, 150 ul THC-OH in 9692.5 ul meOH
Ppd 8/26/20 Exp: 7/1/21 lot 82620 by AMN

Drug	lot	expiration
C-THC	FE01061702	3/1/2022
THC-OH	FE07221601	7/1/2021
THC	FE01041701	3/1/2022

AM 27/26 blood control 100 ul working solution lot () in 9900 ul blood lot ()

		Concentration 7.5 ng/ml THC, 15 ng/ml C-THC, THC-OH	
--	--	--	--

AM 27/26 urine control 400 ul working solution lot (82620) in 9600 ul urine

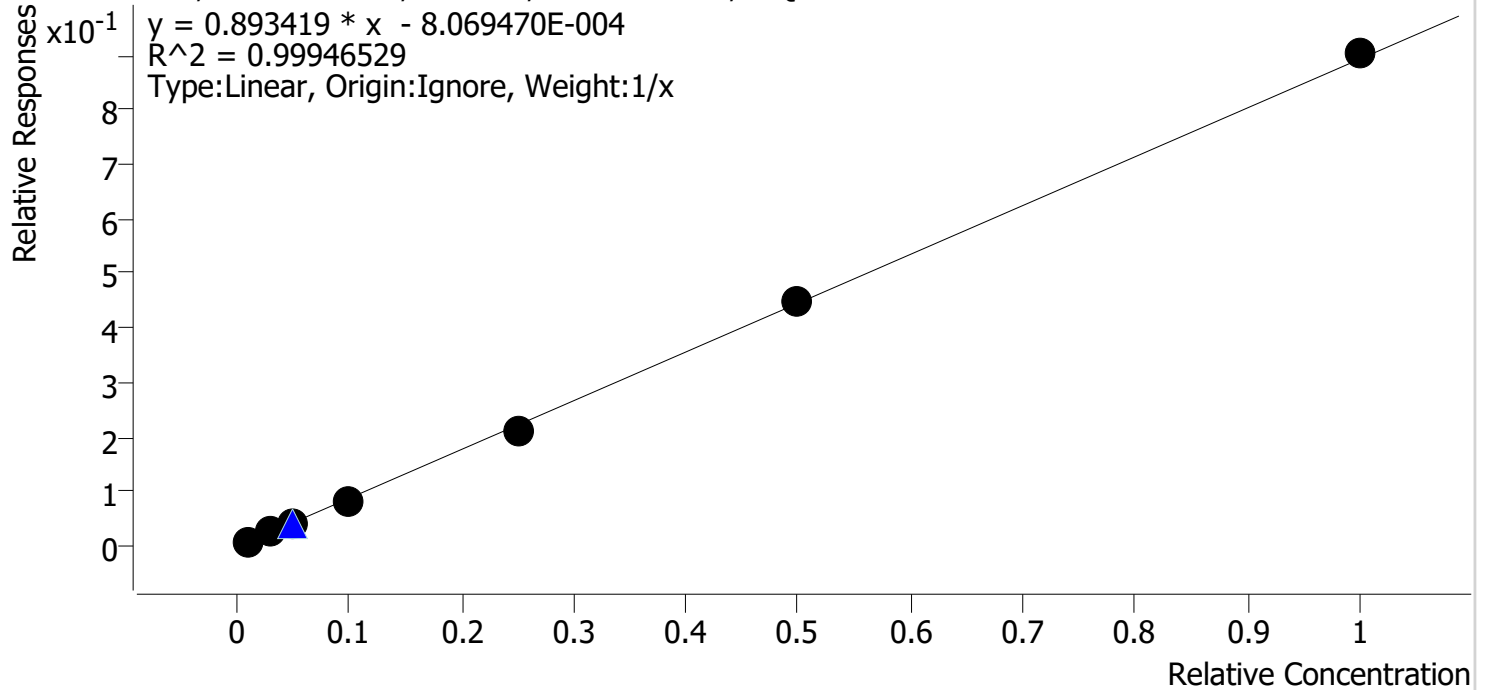
out of use

ppd 8/26/20 Exp 7/1/21 neg urine lot 73020	lot u82620	Concentration 30 ng/ml THC, and 60 ng/ml C-THC, THC-OH	by amn	10/4/2020
ppd 10/5/20 Exp 7/1/21 neg urine lot 10120	lot 10520	Concentration 30 ng/ml THC, and 60 ng/ml C-THC, THC-OH	by amn	

Compound Calibration Report

Batch results D:\MassHunter\Data\2020 Data\am 25-26 112720\QuantResults\mj scr.batch.bin
Last Cal. Update 11/27/2020 10:29 PM
Analyst Name ISP\datastor
Analyte THC **Internal Standard** THC-d3

THC - 7 Levels, 7 Levels Used, 7 Points, 7 Points Used, 1 QCs

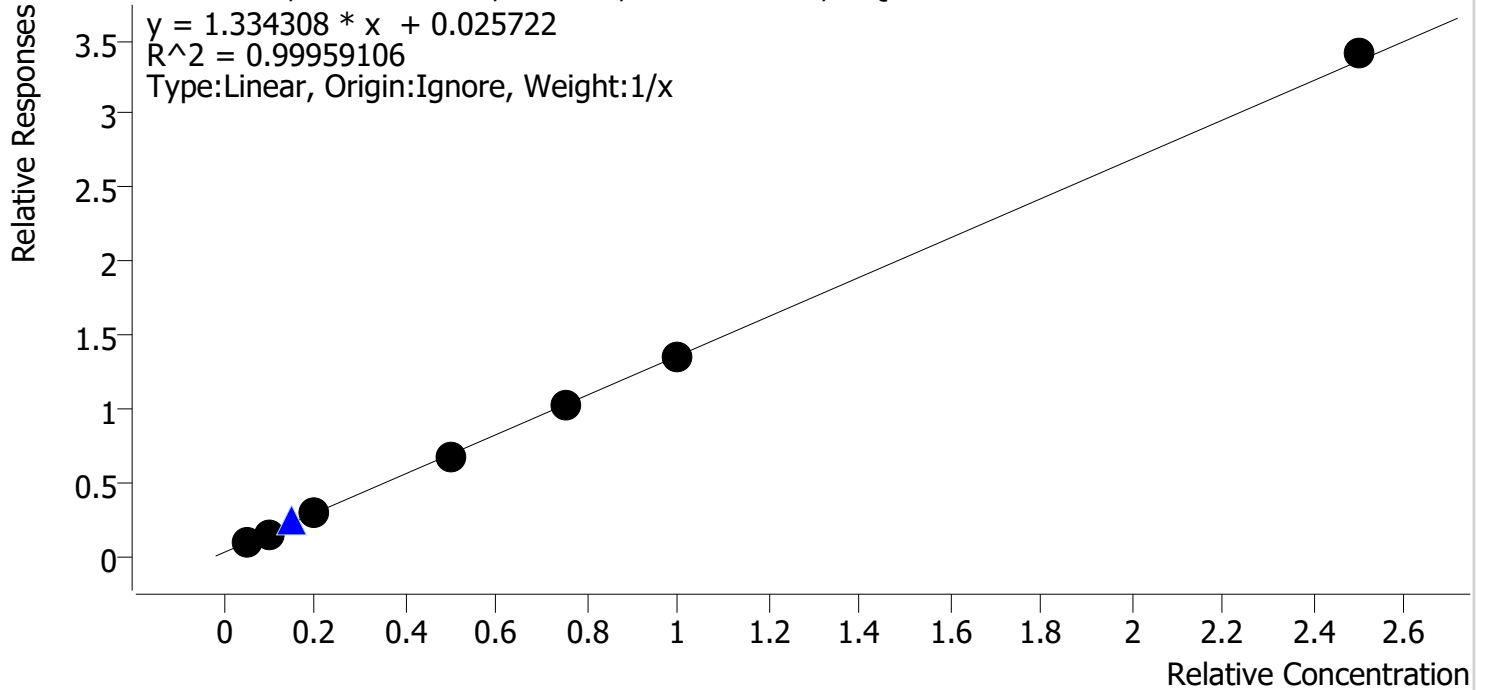


Sample	Level	Enabled	Expected Concentration	Final Concentration	Accuracy
check std 1ng	1	✓	1.0	1.1	110.6
cal 2	2	✓	3.0	2.9	97.4
cal 3	3	✓	5.0	4.9	98.7
cal 4	4	✓	10.0	9.5	95.4
cal 5	5	✓	25.0	24.0	96.1
cal-6	6	✓	50.0	50.4	100.8
cal-7	7	✓	100.0	101.1	101.1

Compound Calibration Report

Batch results D:\MassHunter\Data\2020 Data\am 25-26 112720\QuantResults\mj scr.batch.bin
Last Cal. Update 11/27/2020 10:29 PM
Analyst Name ISP\datastor
Analyte THC-COOH **Internal Standard** THC-COOH-d9

THC-COOH - 7 Levels, 7 Levels Used, 7 Points, 7 Points Used, 1 QCs

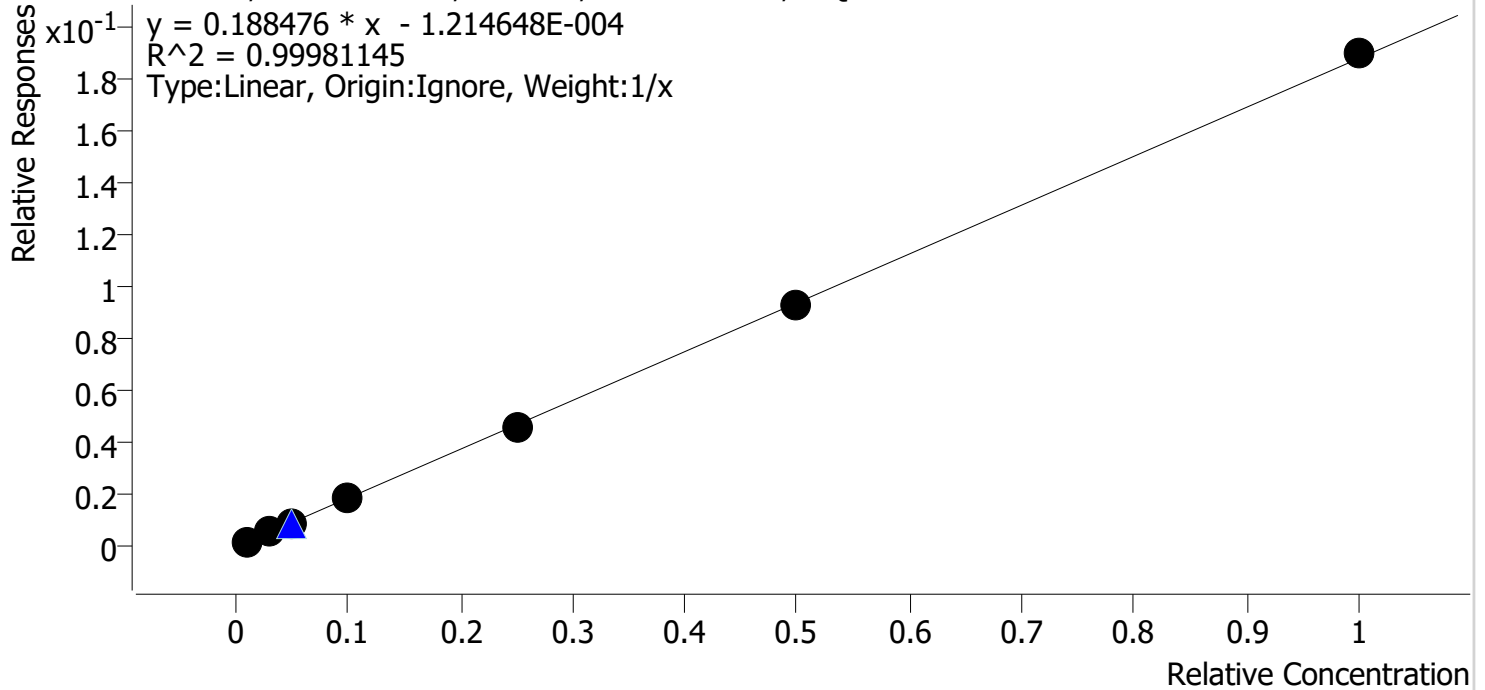


Sample	Level	Enabled	Expected Concentration	Final Concentration	Accuracy
check std 1ng	1	✓	5.0	5.4	107.8
cal 2	2	✓	10.0	9.7	97.1
cal 3	3	✓	20.0	19.7	98.7
cal 4	4	✓	50.0	48.8	97.5
cal 5	5	✓	75.0	74.1	98.8
cal-6	6	✓	100.0	98.6	98.6
cal-7	7	✓	250.0	253.7	101.5

Compound Calibration Report

Batch results D:\MassHunter\Data\2020 Data\am 25-26 112720\QuantResults\mj scr.batch.bin
Last Cal. Update 11/27/2020 10:29 PM
Analyst Name ISP\datastor
Analyte THC-OH **Internal Standard** THC-OH-d3

THC-OH - 7 Levels, 7 Levels Used, 7 Points, 7 Points Used, 1 QCs



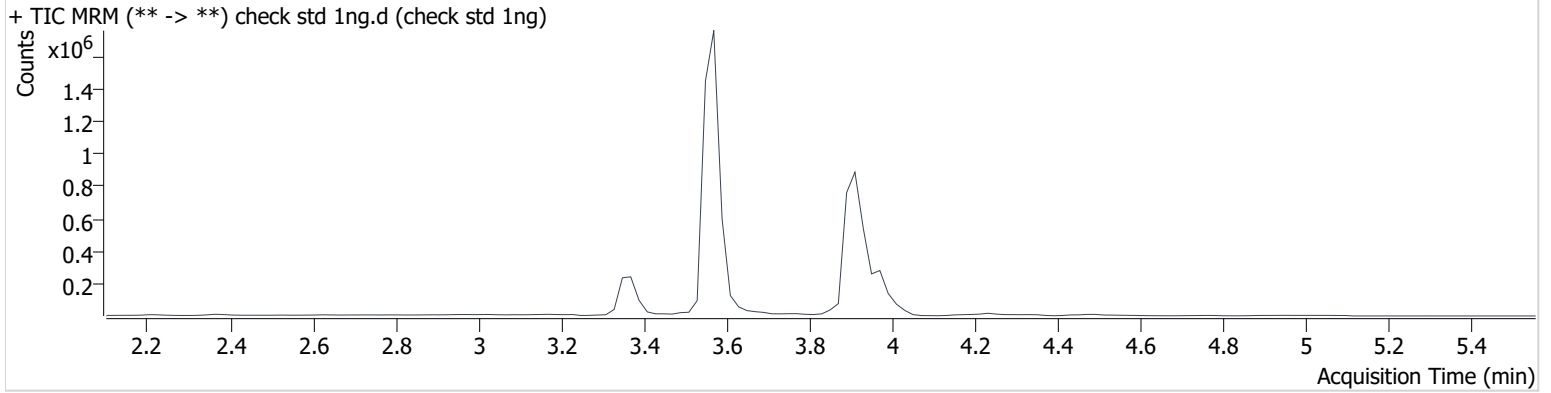
Sample	Level	Enabled	Expected Concentration	Final Concentration	Accuracy
check std 1ng	1	✓	1.0	1.1	106.6
cal 2	2	✓	3.0	2.9	97.3
cal 3	3	✓	5.0	5.0	99.9
cal 4	4	✓	10.0	9.7	97.3
cal 5	5	✓	25.0	24.6	98.4
cal-6	6	✓	50.0	49.7	99.4
cal-7	7	✓	100.0	101.0	101.0

AM #26 Cannabinoids Screen Results

Batch results D:\MassHunter\Data\2020 Data\am 25-26 112720\QuantResults\mj scr.batch.bin
Calibration Last Update 11/27/2020 10:29:37 PM

Instrument 69679 **Data File** check std 1ng.d
Type Cal **Sample** check std 1ng
Acq. Method am 26 cann scr 5-5-20.m **Operator** Brittany Wylie
Sample Position P3-A1 **Comment**
Injection Volume 5
Acq. Date-Time 11/27/2020 5:10:28 PM
Sample Info.

Sample Chromatogram



Name	RT	Resp.	ISTD Resp.	Final Conc.	
THC	3.984	4576	504274	1.106 ng/ml	Low
THC-COOH	3.371	58623	600275	5.391 ng/ml	
THC-OH	3.578	9172	4858459	1.066 ng/ml	Low

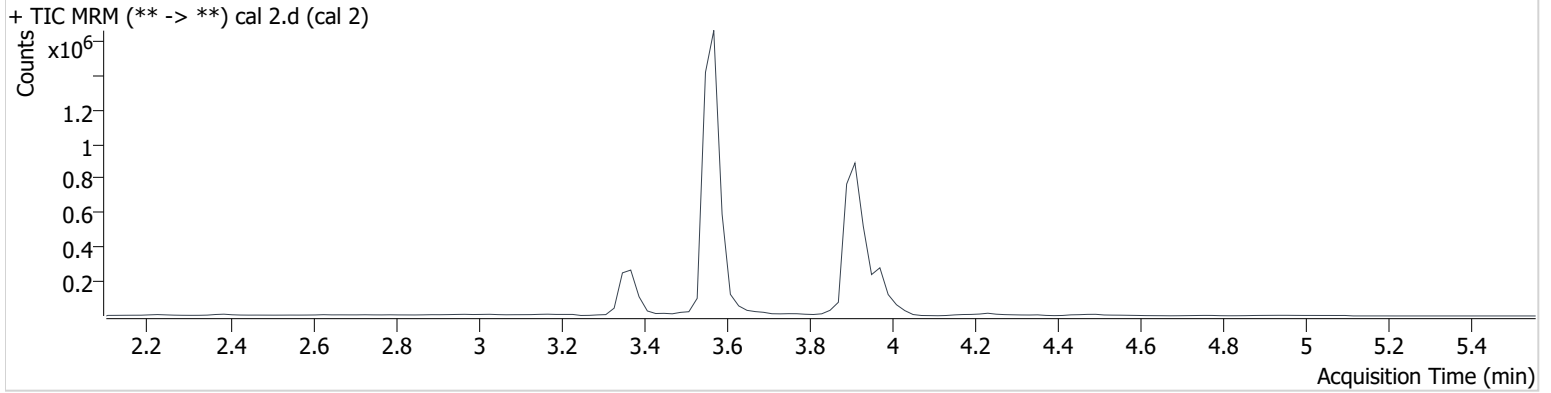
AM #26 Cannabinoids Screen Results

Batch results D:\MassHunter\Data\2020 Data\am 25-26 112720\QuantResults\mj scr.batch.bin
Calibration Last Update 11/27/2020 10:29:37 PM

Instrument	69679	Data File	cal 2.d
Type	Cal	Sample	cal 2
Acq. Method	am 26 cann scr 5-5-20.m	Operator	Britany Wylie
Sample Position	P3-B1	Comment	
Injection Volume	5		
Acq. Date-Time	11/27/2020 5:17:08 PM		

Sample Info.

Sample Chromatogram



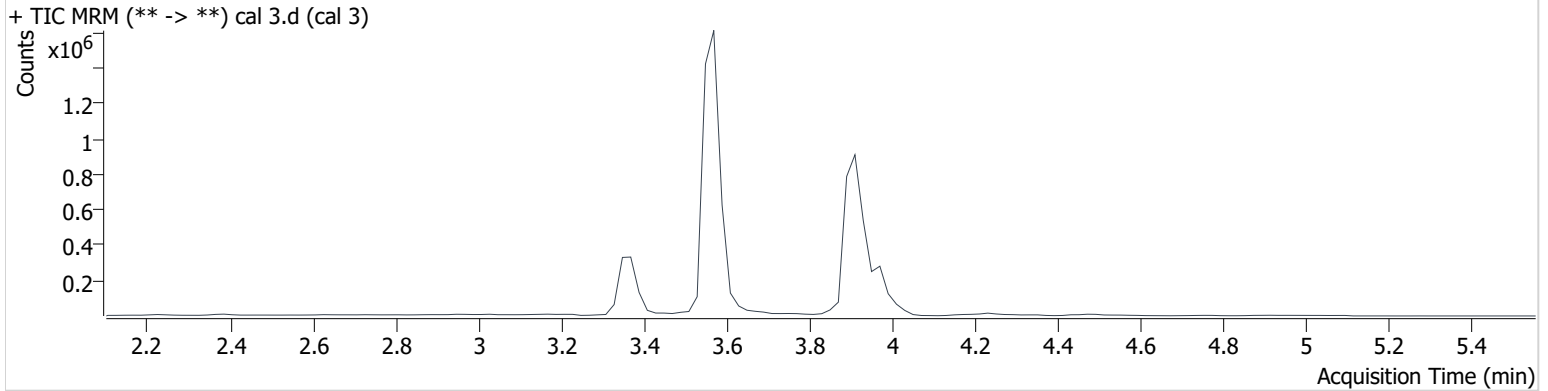
Name	RT	Resp.	ISTD Resp.	Final Conc.	
THC	3.984	12111	478825	2.921 ng/ml	Low
THC-COOH	3.371	94331	607368	9.712 ng/ml	
THC-OH	3.578	24445	4542004	2.920 ng/ml	Low

AM #26 Cannabinoids Screen Results

Batch results D:\MassHunter\Data\2020 Data\am 25-26 112720\QuantResults\mj scr.batch.bin
Calibration Last Update 11/27/2020 10:29:37 PM

Instrument	69679	Data File	cal 3.d
Type	Cal	Sample	cal 3
Acq. Method	am 26 cann scr 5-5-20.m	Operator	Britany Wylie
Sample Position	P3-C1	Comment	
Injection Volume	5		
Acq. Date-Time	11/27/2020 5:23:44 PM		
Sample Info.			

Sample Chromatogram



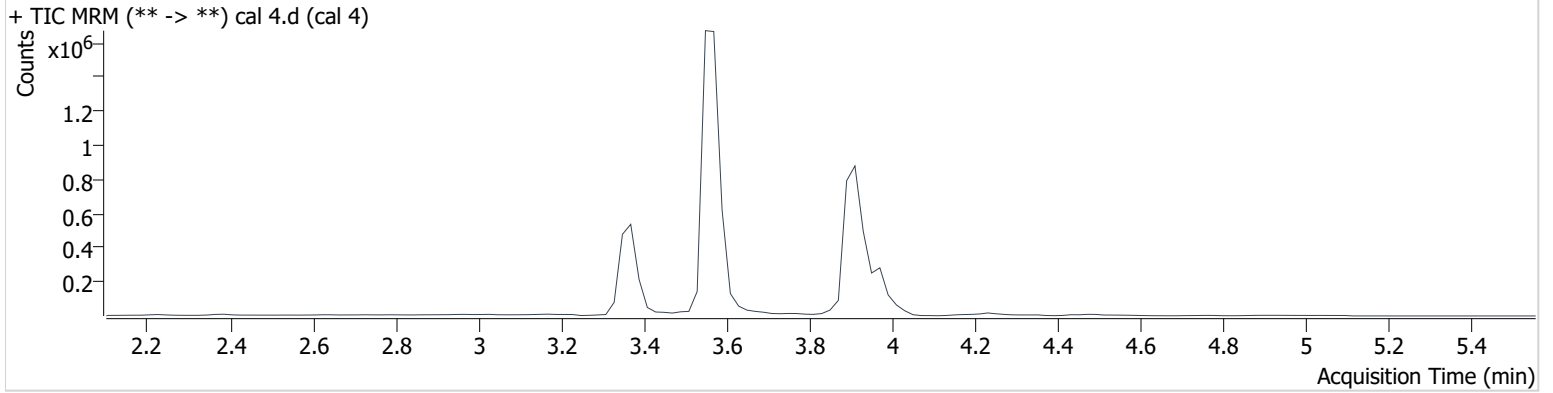
Name	RT	Resp.	ISTD Resp.	Final Conc.
THC	3.984	20209	467139	4.933 ng/ml
THC-COOH	3.371	181963	629630	19.731 ng/ml
THC-OH	3.578	40665	4373845	4.997 ng/ml

AM #26 Cannabinoids Screen Results

Batch results D:\MassHunter\Data\2020 Data\am 25-26 112720\QuantResults\mj scr.batch.bin
Calibration Last Update 11/27/2020 10:29:37 PM

Instrument	69679	Data File	cal 4.d
Type	Cal	Sample	cal 4
Acq. Method	am 26 cann scr 5-5-20.m	Operator	Britany Wylie
Sample Position	P3-D1	Comment	
Injection Volume	5		
Acq. Date-Time	11/27/2020 5:30:20 PM		
Sample Info.			

Sample Chromatogram



Name	RT	Resp.	ISTD Resp.	Final Conc.
THC	3.984	40129	475111	9.544 ng/ml
THC-COOH	3.371	412530	609954	48.760 ng/ml
THC-OH	3.578	81194	4455866	9.732 ng/ml

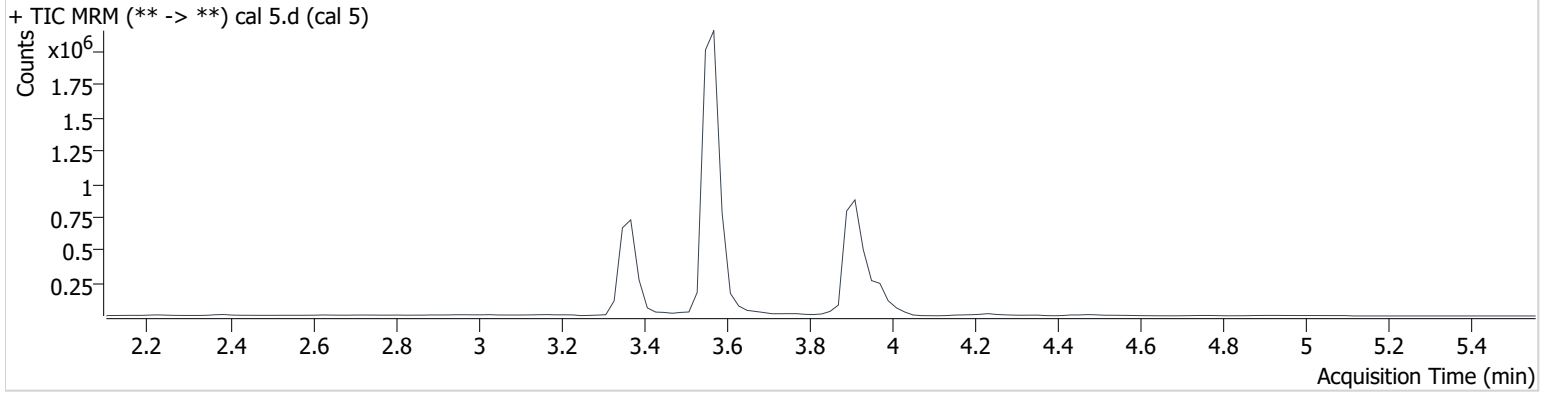
AM #26 Cannabinoids Screen Results

Batch results D:\MassHunter\Data\2020 Data\am 25-26 112720\QuantResults\mj scr.batch.bin
Calibration Last Update 11/27/2020 10:29:37 PM

Instrument	69679	Data File	cal 5.d
Type	Cal	Sample	cal 5
Acq. Method	am 26 cann scr 5-5-20.m	Operator	Britany Wylie
Sample Position	P3-E1	Comment	
Injection Volume	5		
Acq. Date-Time	11/27/2020 5:36:56 PM		

Sample Info.

Sample Chromatogram



Name	RT	Resp.	ISTD Resp.	Final Conc.
THC	3.984	83105	388738	24.019 ng/ml
THC-COOH	3.371	639364	630566	74.063 ng/ml
THC-OH	3.578	212097	4587085	24.597 ng/ml

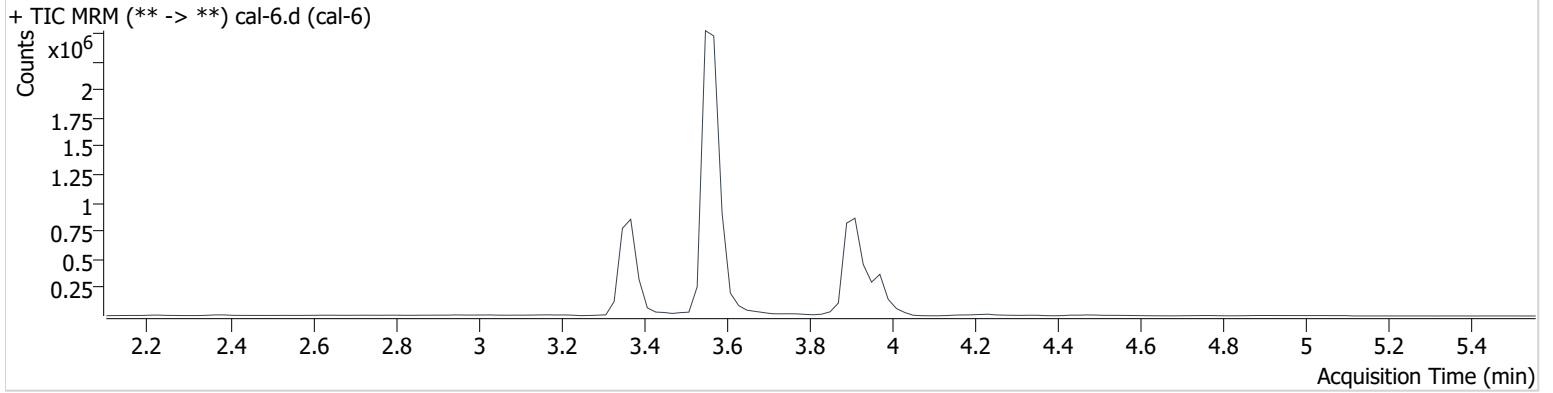
AM #26 Cannabinoids Screen Results

Batch results D:\MassHunter\Data\2020 Data\am 25-26 112720\QuantResults\mj scr.batch.bin
Calibration Last Update 11/27/2020 10:29:37 PM

Instrument	69679	Data File	cal-6.d
Type	Cal	Sample	cal-6
Acq. Method	am 26 cann scr 5-5-20.m	Operator	Britany Wylie
Sample Position	P3-F1	Comment	
Injection Volume	5		
Acq. Date-Time	11/27/2020 5:43:34 PM		

Sample Info.

Sample Chromatogram



Name	RT	Resp.	ISTD Resp.	Final Conc.
THC	3.984	214450	477292	50.381 ng/ml
THC-COOH	3.371	809240	603051	98.642 ng/ml
THC-OH	3.578	397413	4246571	49.718 ng/ml

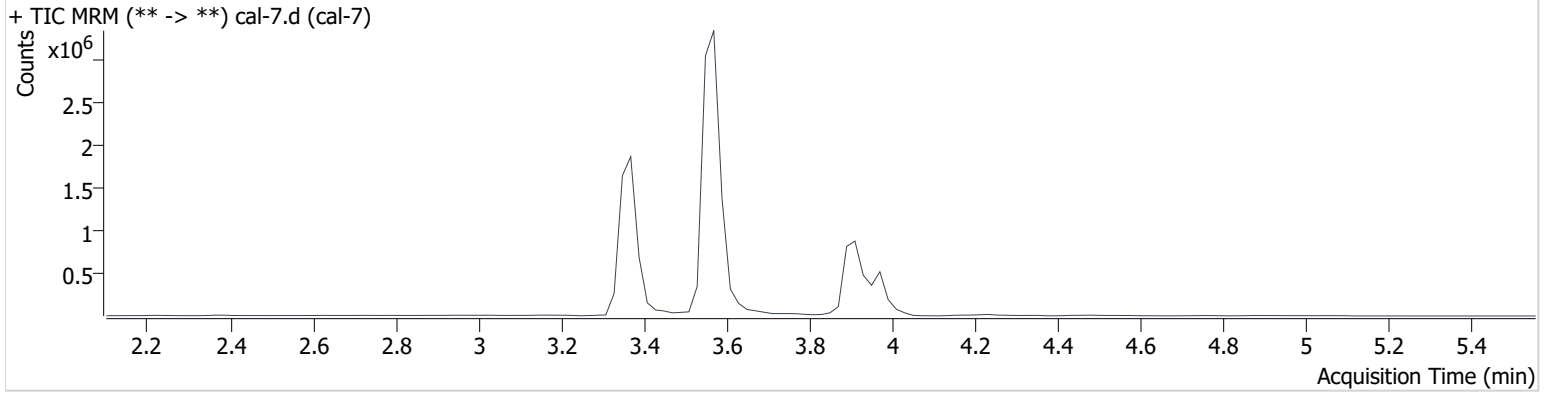
AM #26 Cannabinoids Screen Results

Batch results D:\MassHunter\Data\2020 Data\am 25-26 112720\QuantResults\mj scr.batch.bin
Calibration Last Update 11/27/2020 10:29:37 PM

Instrument	69679	Data File	cal-7.d
Type	Cal	Sample	cal-7
Acq. Method	am 26 cann scr 5-5-20.m	Operator	Britany Wylie
Sample Position	P3-G1	Comment	
Injection Volume	5		
Acq. Date-Time	11/27/2020 5:50:10 PM		

Sample Info.

Sample Chromatogram



Name	RT	Resp.	ISTD Resp.	Final Conc.
THC	3.984	447780	496207	101.096 ng/ml
THC-COOH	3.371	1996169	585240	253.700 ng/ml
THC-OH	3.578	722289	3797872	100.970 ng/ml

am 26
11/27/20 WORKLIST 4632

BW

	1	2	3	4	5	6
A	IS + Cal. 1	neg blood	C2279-1	C2369-1	C2249-1	IS + QC_1
B	IS + Cal. 2	C2243-1	C2281-1	p3350-1		IS + Cal. 7
C	IS + Cal. 3	C2248-1	C2316-1	neg urine		IS + Cal. 6
D	IS + Cal. 4	C2249-1- did not flow thru sle	C2340-1	urine ext ctrl		IS + Cal. 5
E	IS + Cal. 5	C2255-1	C2341-1	C2302-1		IS + Cal. 4
F	IS + Cal. 6	C2256-1	C2347-2	C2319-1		IS + Cal. 3
G	IS + Cal. 7	C2266-1	C2367-1	C2320-1		IS + Cal. 2
H	IS + QC_1	C2278-1	C2368-1	C2323-1		IS + Cal. 1

All wells to contain 100 µl of residual DMSO

Case #: __2020-____-__